



Easy Classroom Websites With Weebly

Meredith Martin
www.techforteachers.com



This work from Techforteachers.com by Meredith Martin is licensed under a [Creative Commons Attribution-NonCommercial-ShareAlike 4.0 International License](https://creativecommons.org/licenses/by-nc-sa/4.0/).

Getting Started

- Go to **education.weebly.com**
- New Users: Fill in the information to create your account.
- Existing Users: Sign in at the top.

New Users

Get Started Now

Already have a Weebly account? [Log-in](#)

Username
Password
Email

☐ I accept the [terms of service](#)

Sign Up

Existing Users

Username
Password

☒ Remember Me | [Forgot PW](#)

log in

Getting Started

- Once your account is set up, you have the option to fill in more information. You can complete the form or click Skip This Step. On the next screen, choose Create a Website, and then choose Site.

The image shows a three-step setup process for Weebly for Education. Step 1 is a form titled 'Welcome to Weebly for Education!' with fields for 'Your Name', 'School name', 'School district', and 'Country'. A 'Skip this step.' button is shown below the form. Step 2 is titled 'Let's Get You Started!' and offers three options: 'Watch a Demo', 'Set up a Class', and 'Create a website'. The 'Create a website' option is highlighted with a black box. Step 3 is titled 'What's the Focus of Your Site?' and offers three options: 'Site', 'Blog', and 'Store'. The 'Site' option is highlighted with a black box.

Welcome to Weebly for Education!
Fill out the information below to get started.

Your Name: Mr. [] []
School name: []
School district (if applicable): []
Country: Select One []
Submit

Let's Get You Started!
What would you like to do next?

Watch a Demo
Set up a Class
Create a website

What's the Focus of Your Site?

Site
Blog
Store

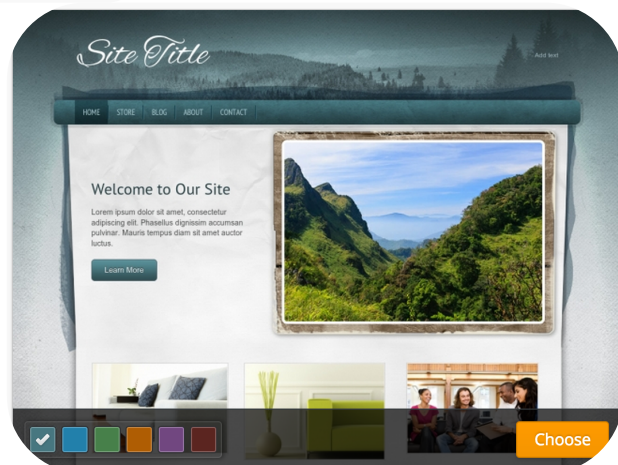
Themes

Themes control the overall look of your site. Take some time to explore and choose a theme. Themes can always be changed. Changing a theme does NOT affect your content, only the look of your site. Some themes have multiple color options.

Choose a Theme

You can easily change this later

Theme Color Options



Domain

Your domain is the address of your website. Choose **Use a Subdomain of Weebly.com** and type in a name. Once you have a name, if you change it you change the address of your site. The bottom two options are available for a cost.

Choose Your Website Domain

This is the address where people will find your website online. Reserve your domain now or skip this step and choose it later.

☒ Use a Subdomain of Weebly.com

A great way to get your website started

http:// .weebly.com

☐ Register a New Domain

For a more professional online presence

http://www. .com

☐ Connect a Domain You Already Own

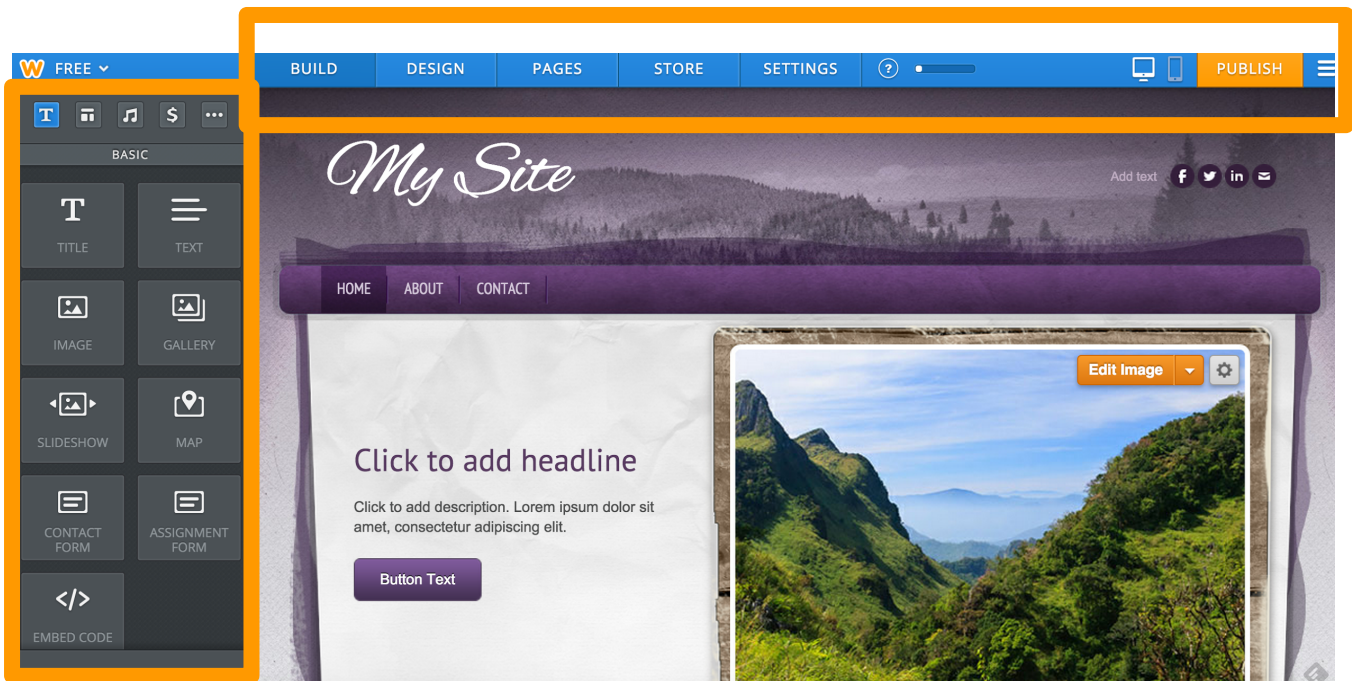
We'll help you connect your domain when you're ready to publish

http://

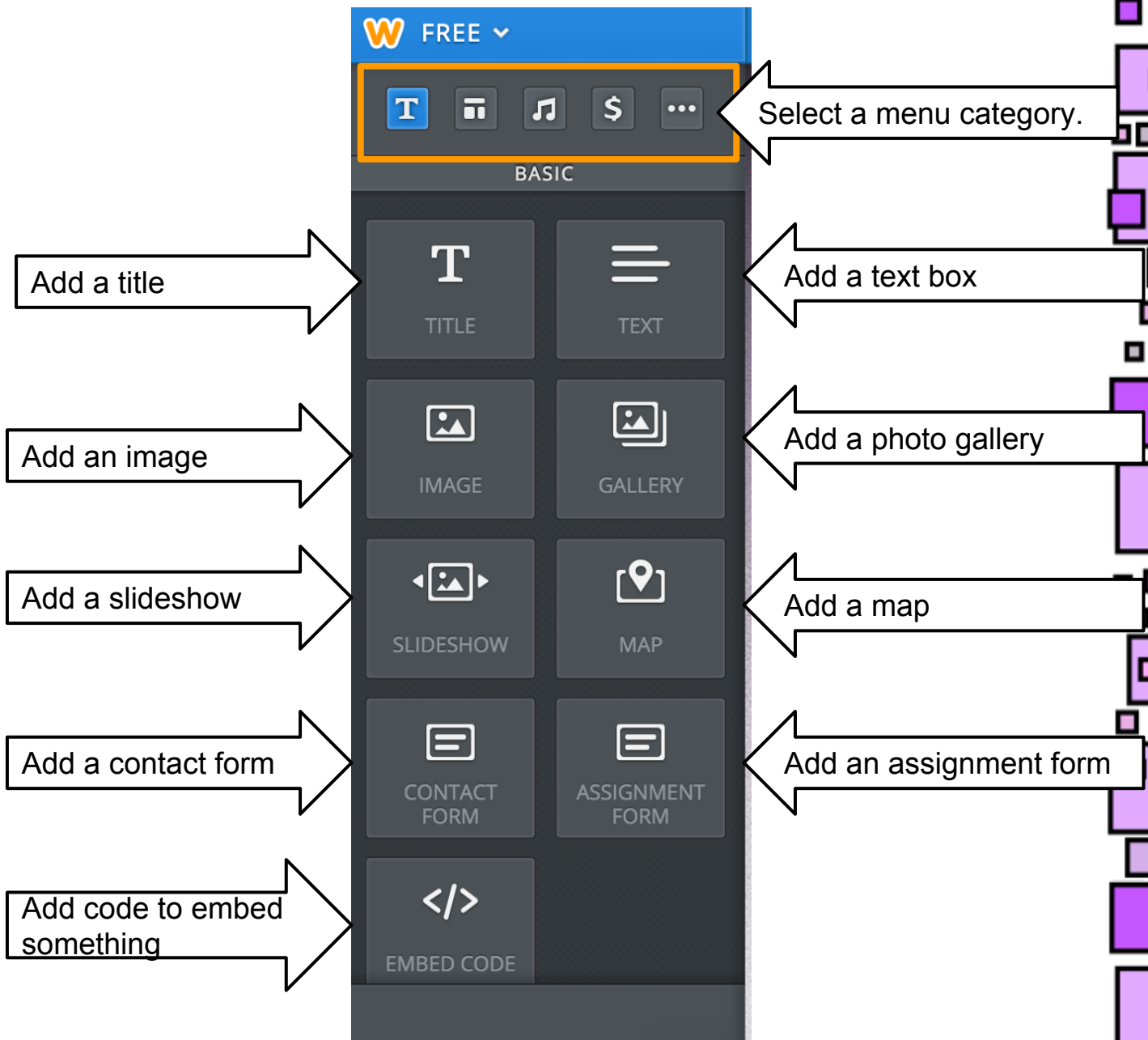
[Continue](#)

Customize It!

Now it's time to customize your site. You have two menu bars - one at the top and one on the left. Your site content is in the middle.



Left Menu



Scroll down the menu or use the category buttons at the top for more options. All items are drag-and drop and can be easily rearranged.

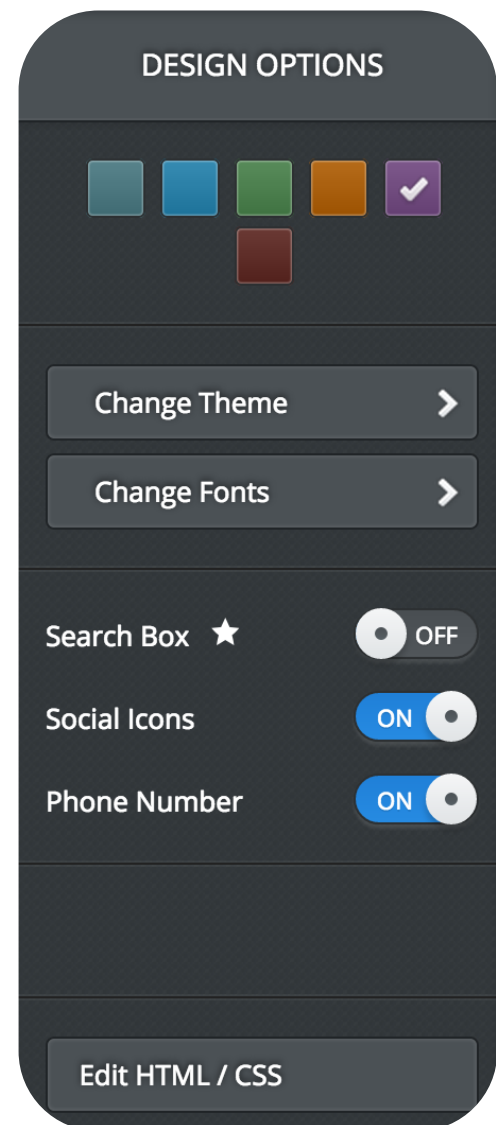
Top Menu

The top menu lets you toggle between different aspects of your site. It also allows you to preview your site for both computer views and mobile device views. Your site will not go live until you click the Publish button. The Build menu is the default, and is where you add items and content to your site.



Design

The Design module lets you fine-tune the look of your site. You can modify your existing theme, including colors, fonts, and more, or you can choose a brand new theme. Remember, changing themes does not affect your content, so you won't lose anything on your site.



Pages

This module makes it easy to add and arrange new pages for your site. Click the ADD button, choose a name and layout, and you are good to go. On the left, drag and drop pages into the order you prefer.

Pages

+ Add

Home

About

Contact

Tip: Drag pages up/down to reorder and left/right to create subpages.

Edit Page

Page Name

Home

☐ Hide page in navigation

Page Layout:

Tall Header

Short Header

No Header

Landing Page

Visibility: ?

Public

Settings

The Settings module allows you to make changes to things like your site title and address. Remember that if you change your address, your old one will no longer work.

✕

⚙️ General

📈 SEO

✍️ Editors

💬 Blog

🛒 Store

General

Site Address

msmartinslab.weebly.com

Change

Site Title

My Site

Save

☒ Show title on the top of your pages

SSL

Other Items

Many of the objects on your site can be edited. Just hover your mouse over items to see what options are available.



Publishing

Publishing your site makes it live on the web. When you publish the first time, you have the option to change your domain one last time. When you publish, it will let you know your site is live.



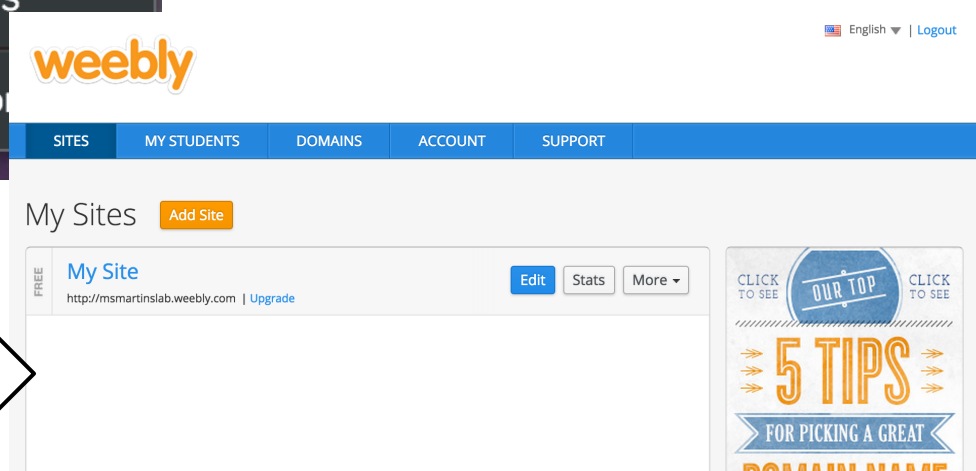
Other Items

Next to your Publish button is your menu button. From here you can exit the editor, go to your dashboard, and more. From your dashboard you can edit existing sites, or create new ones.



Main Menu

Dashboard



Notes

My Username:

My Password:

My Website Address: